

MERCURE

HOTEL

SYDNEY



Central Location, Urban Feel

Mercure Sydney is a vibrant city hotel located a short walk from major local attractions including Chippendale, Surry Hills, Chinatown, Darling Harbour and the International Convention Centre (ICC). Bondi beach, Circular Quay and the historic Rocks precinct are all just moments away by public transport, located on Mercure Sydney's doorstep.

HOTEL FACILITIES

- Private car park
- 24-hour concierge
- Express check out
- Indoor rooftop swimming pool
- Sauna and air conditioned gym
- Car rental + Electric car charging point

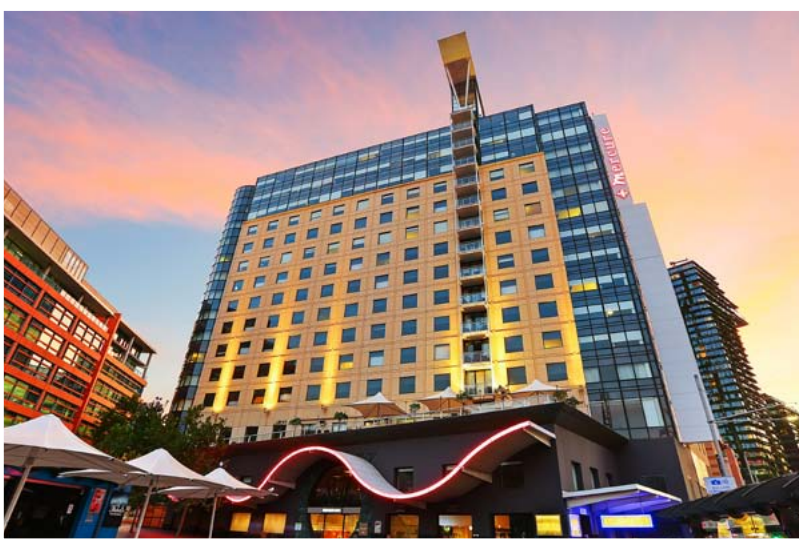
ACCOMMODATION

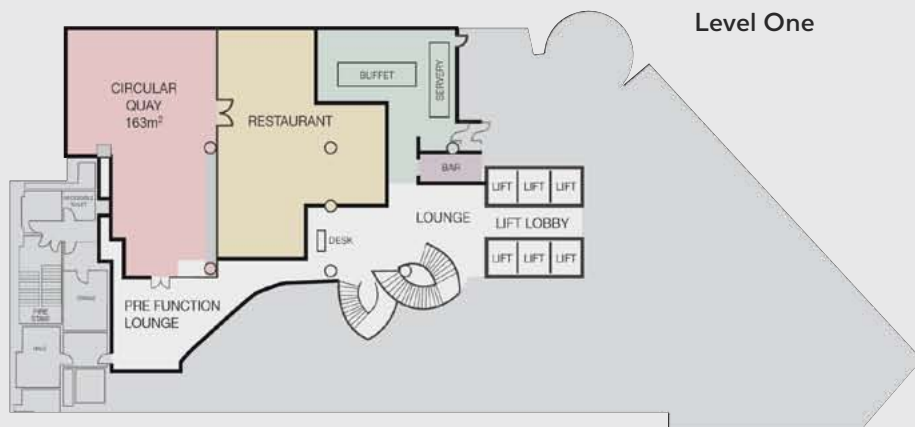
Mercure Sydney is the ultimate urban sanctuary for business or leisure. 517 rooms and suites packed with thoughtful amenities including smart flat-screen TVs, mini bar, and a full pillow menu.

EAT & DRINK

Platform 818 Restaurant and Bar, located on Level 1, is open for breakfast and dinner 7 days a week.

Eve's Bar is located on ground floor and offers local craft beer, cocktails and an Aussie pub-inspired menu.





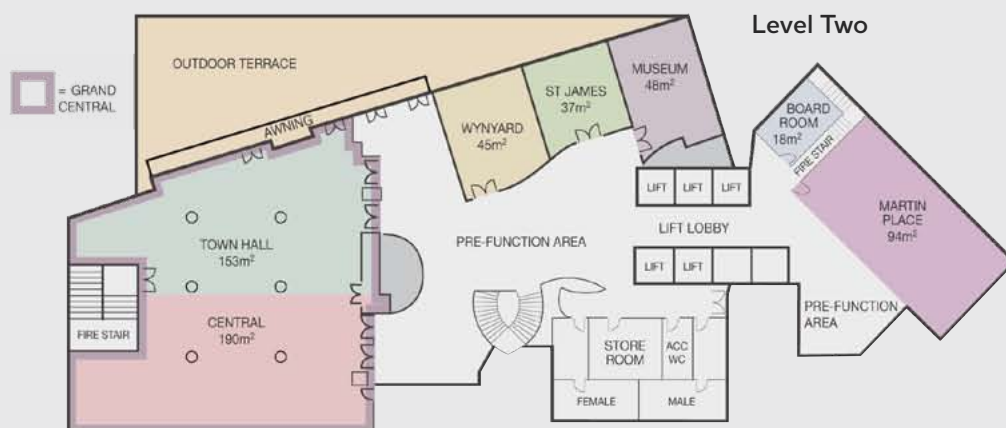
Level One

LOYALTY COUNTS

Accor Live Limitless is the Accor global loyalty program. Receive access to exclusive offers, free wi-fi and additional benefits when travelling and dining with us at our food and beverage venues.

TECHNICAL FEATURES

- On-site AV team
- State of the art integrated function room audio visual systems
- High-speed broadband Internet
- Custom floor plans available for your event



Level Two

MINDFUL MEETINGS

Our dedicated conference floor features 11 function rooms filled with natural daylight and generous pre-function spaces. Our outdoor terrace overlooking the city is the ideal spot for your cocktail or private dinner event.

CAPACITY CHART

Function Room	Ceiling Height	Area (m2)	Area (ft2)	Theatre	Classroom 2 per table	Classroom 3 per table	Boardroom 3 per table	U-Shape 3 per table	Cabaret 10 per table	Banquet 11 per table	Cocktail
Grand Central	2.8m	343	3692	300	130	195	-	-	160	220	400
Central	2.8m	190	2045	140	46	69	22	27	70	130	200
Town Hall	2.8m	153	1647	100	32	48	22	26	60	100	150
Wynyard	2.3m	45	484	40	14	21	18	18	30	30	50
St James	2.3m	37	398	35	12	18	14	15	20	20	30
Museum	2.3m	48	517	50	18	27	20	21	30	40	50
Wynyard + St James	2.3m	82	883	50	24	36	-	-	50	50	70
St James + Museum	2.3m	85	915	60	28	42	-	-	50	50	70
Wynyard + St James + Museum	2.3m	130	1399	90	40	60	-	-	70	90	120
Martin Place	2.3m	94	1012	70	22	33	30	27	40	60	100
Executive Boardroom	2.3m	18	194	-	-	-	8	-	-	-	-
Pier One	2.6m	71	764	60	24	36	26	27	40	50	70
Pier Two	2.6m	90	969	60	32	48	12	18	50	60	-
Circular Quay	2.6m	163	1755	160	56	84	40	36	80	110	180
Terrace	-	170	1830	-	-	-	-	-	-	70	150